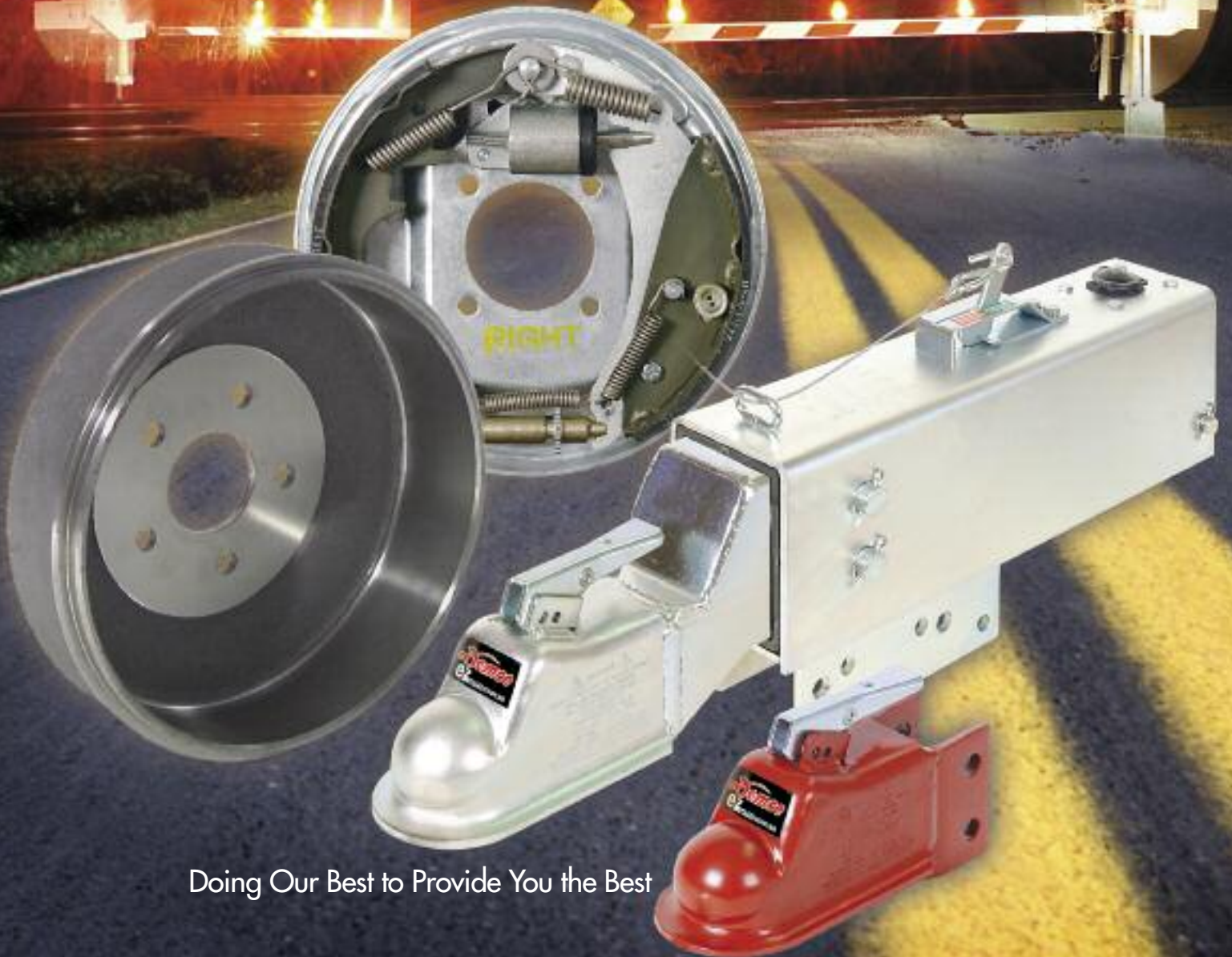


Demco

Hydraulic Brake Systems and Trailer Components

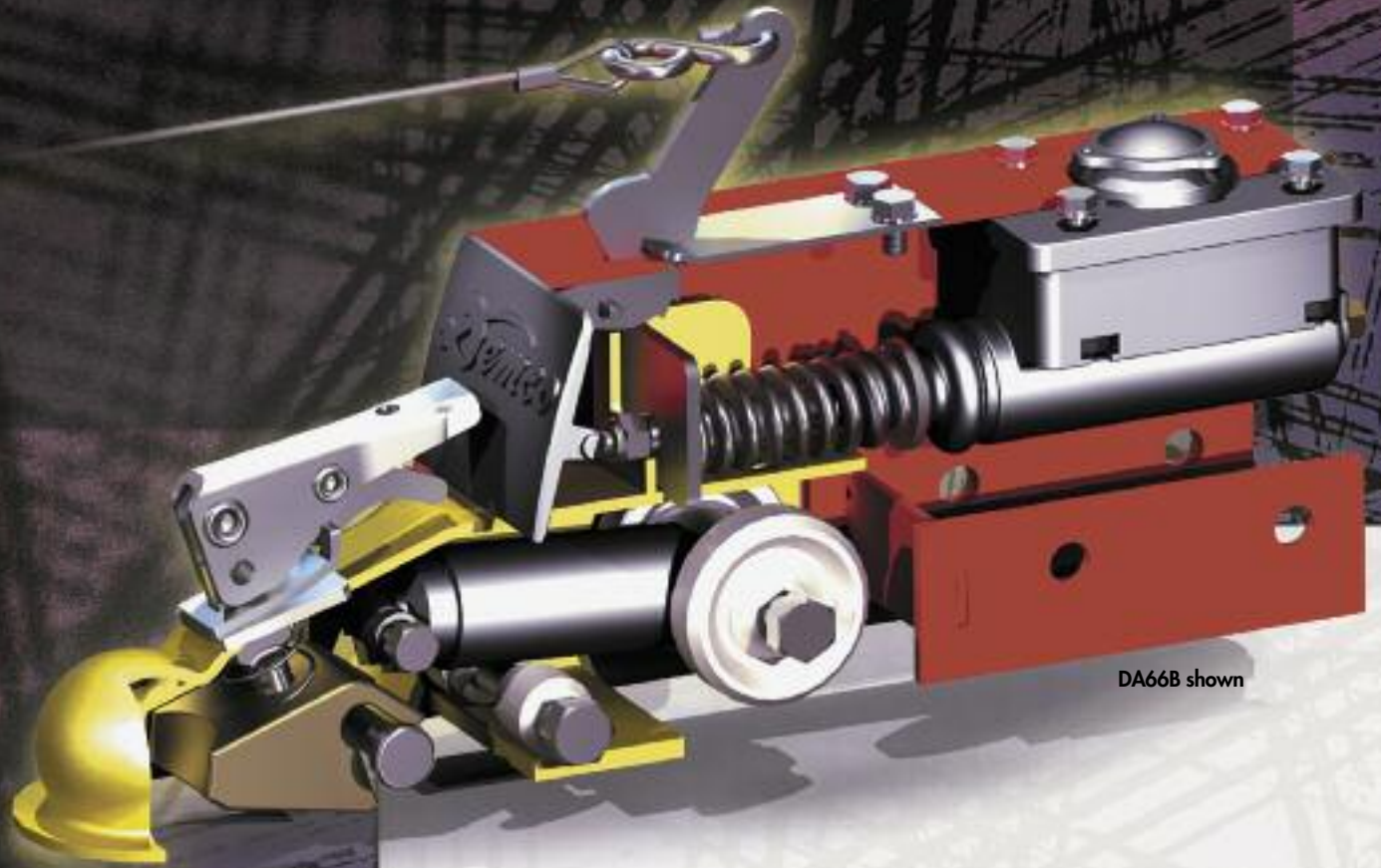
Actuators
Clusters
Drums

Brake Components
Couplers
Brake Line Kits



Doing Our Best to Provide You the Best

The merits of an impressive brake system



DA66B shown



DA91 shown

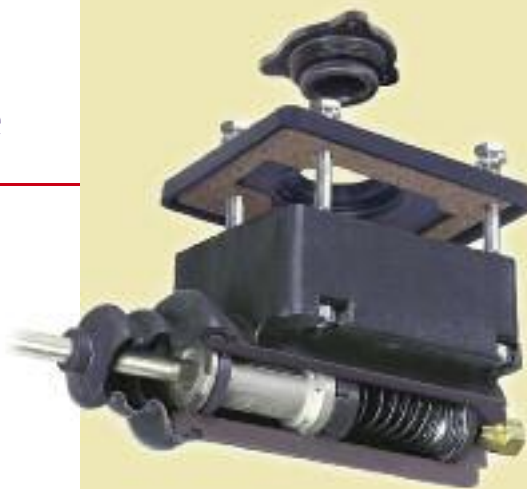


DA10 shown

call for a close look inside

Demco Hydraulic Brake Actuators Feature

- Master cylinder cap has a diaphragm providing a completely enclosed hydraulic brake system on all models.
- Raised fill plate prevents contaminants from entering master cylinder when removing cap (all models).
- Tie loops on cap can be used for a tamper resistant seal.
- Bellow boot on push rod for moisture and dirt prevention (all models).
- Emergency lever guide with color coded decal indicates if brakes are on or off (all actuators except DA66B).
- Actuators ranging from 6,000 lb. to 20,000 lb. G.V.W.R.
- Wide range of coupler choices & hitch configurations
- Actuators fit standard 3" tubing.
- 50° A-frame mounting is available.
- 6,000 to 20,000 lb. actuators utilize acetal copolymer linings. Rollers are eliminated on DA91, DA10 and DA20 models.
- Brake line pressure controlled by spring loaded push rod assembly.
- Integrated shock dampening design.
- Emergency break-away lever with cable hook-up and easy reset.
- Heavy duty construction for rental, industrial and other high usage and extreme stress applications.
- Corrosion resistant finish provides long-lasting, attractive appearance. Plated finish is 500 hour salt spray tested.
- Quality Control checks through production & assembly lines.
- DA20 disc brake actuators feature a 1 ¼" aluminum master cylinder and a heavy duty push rod assembly for higher pressures. This master cylinder has 50% more displacement.



U.S. Patent No. 6,658,844

Demco's Master Cylinder composite construction provides benefits and features not available with other materials.

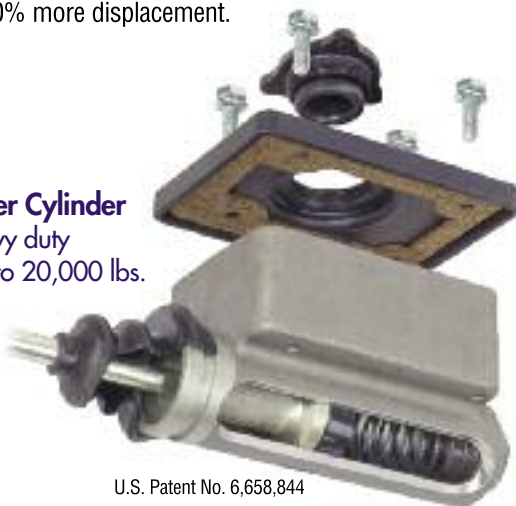
Features:

- **Composite Material** – Long glass reinforced nylon master cylinder is used on all Demco actuators except DA20 models for disc brakes. Rust and corrosion of the master cylinder are eliminated.
- **Durability** – Extensive stroke testing to over 1 million cycles at 75 - 100% of maximum pressure generated no failure or significant wear.
- **Larger reservoir** – 20% more capacity insures adequate brake fluid supply.
- **Retrofits** – The new composite master cylinder replaces existing Demco master cylinders without modifications. Replacement kits are available for disc and drum brake applications.
- **Splash Baffle** – Brake fluid "geyser" is deflected when bleeding brake system.

NEW!

Demco's Aluminum Master Cylinder

provides corrosion free, heavy duty braking power for loads up to 20,000 lbs. All Demco DA20 disc brake actuators include this aluminum master cylinder.



U.S. Patent No. 6,658,844

DA86



EZ-Latch - 8600 lbs.

The DA86 new design incorporates new benefits and features.

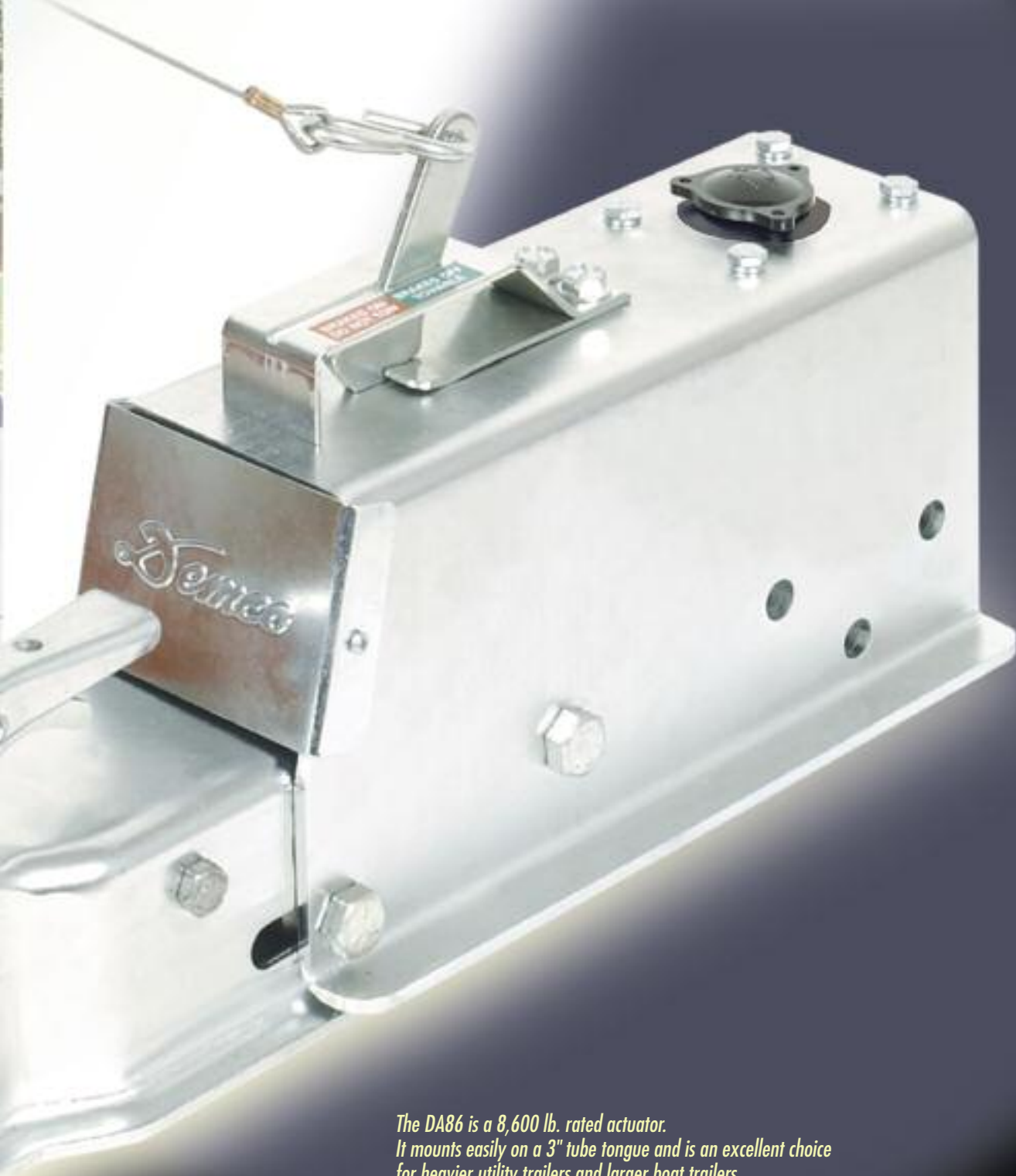
- Larger rear rollers** – Larger rollers provide easier movement of coupler and smoother operation of actuator.
- Lower coupler height** – Coupler height is the same as the previous DA66 - 4" to 4½" lower than the DA603 top mount.
- Cross brace** – Reinforced outer case. This brace will help prevent over-tightening of the mounting bolts, (an unfavorable practice that could restrict sliding of the coupler and not allow the actuator to function properly).
- Safety cable w/ snap hook** – Replacing "S" hook with snap hook prevents safety cable from accidentally unhooking.
- Common master cylinder** – Same composite master cylinder as other Demco actuators.



PATENT PENDING

Demco
eZ-LATCH Coupler

See page 11 for EZ-Latch Coupler details.



*The DA86 is a 8,600 lb. rated actuator.
It mounts easily on a 3" tube tongue and is an excellent choice
for heavier utility trailers and larger boat trailers.
Disc brake version includes free backing solenoid kit.*



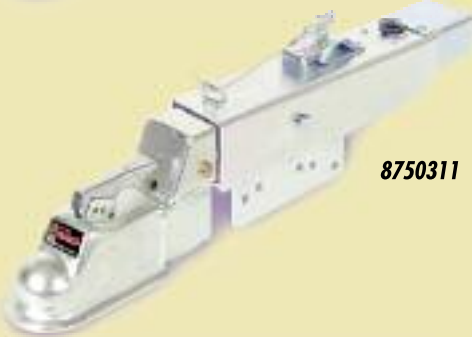
8605101



8758811



8758911



8750311



8608611

6,000 lb. G.V.W.R.

2 - 1/2" x 4 1/2" grade 5 bolts are required in mounting of straight actuators. 600 lb. maximum tongue load on 6,000 lb. G.V.W.R. actuators. G.V.W.R. – Limited to coupler rating. Plated actuator may be used in a marine application.

| ITEM # | TYPE | DESCRIPTION | WT (LBS.) |
|---------|-------|--|-----------|
| 8605101 | DA66B | Plated, lever lock coupler Includes factory installed blocking solenoid kit | 22 |

8,000 lb. G.V.W.R.

1/2" x 4 1/2" grade 5 bolts are used in mounting of straight actuators. 800 lb. maximum tongue load or 10% of G.V.W.R. of coupler, vehicle, ball or trailer. Plated actuator may be used in a marine application. DA91 actuator utilizes Acetal Copolymer linings. Rollers are eliminated. G.V.W.R. – Limited to coupler rating. Emergency lever support and guide ring (on DA91 series).

Custom mounting available upon request (50 quantity minimum).

| ITEM # | TYPE | DESCRIPTION | WT (LBS.) |
|---------|------|--|-----------|
| 8758811 | DA91 | Plated, 2 5/16" EZ-Latch, drop tube, standard outer case | 52 |
| 8758721 | DA91 | Plated, channel center, standard outer case | 48 |
| 8758911 | DA91 | Plated, 2 5/16" EZ-Latch, drop tube, 5-hole mount | 52 |

With bypass solenoid kits installed

| | | | |
|---------|------|--|----|
| 8758411 | DA91 | Plated, 2 5/16" EZ-Latch, drop tube, standard outer case | 54 |
| 8750311 | DA91 | Plated, 2 5/16" EZ-Latch, drop tube, 5-hole mount | 54 |

With blocking solenoid kits installed

| | | | |
|---------|------|--|----|
| 8750411 | DA91 | Plated, 2 5/16" EZ-Latch, drop tube, standard outer case | 39 |
| 8759422 | DA91 | Primed, channel center, standard outer case | 54 |

Bypass solenoid kits for disc brakes (fit both DA91 and DA10 actuators).

| | | | |
|------|------|----------------------------------|---|
| 5752 | DA91 | Solenoid kit (factory installed) | 2 |
| 5750 | DA91 | Solenoid kit (field installed) | 2 |

Blocking solenoid kit for disc brakes (fit both DA91 and DA10 actuators).

| | | | |
|------|------|--------------------------------|---|
| 5837 | DA91 | Solenoid kit (field installed) | 2 |
|------|------|--------------------------------|---|

Note: Solenoid kit design is subject to change at Demco's discretion.

8,600 lb. G.V.W.R.

3 - 1/2" x 4 1/2" grade 5 bolts are required in mounting of straight actuators. 860 lb. maximum tongue load or 10% of G.V.W.R. of coupler, vehicle, ball or trailer. Plated actuator may be used in a marine application.

| ITEM # | TYPE | DESCRIPTION | WT (LBS.) |
|---------|------|--|-----------|
| 8608611 | DA86 | Plated, 2" EZ-Latch, bolt on case, includes blocking solenoid | 22 |
| 8608711 | DA86 | Painted black, EZ-Latch bolt on case, includes blocking solenoid | 22 |

NOTE: Demco 2" EZ-Latch Couplers are Patent Pending.

12,500 lb. G.V.W.R.

½" x 4 ½" grade 5 bolts are required to mount actuators. 1,250 lb. maximum tongue load or 10% of G.V.W.R. of coupler, vehicle, ball or trailer. DA10 actuators utilize Acetal Copolymer linings. Rollers are eliminated. DA10 actuators may be ordered with or without various couplers. All DA10 models with coupler adjusting channels have 3" inside dimensions. Emergency lever support and guide ring standard on DA10 series.

Note: All DA10 disc brake actuators feature a 1 ¼" aluminum master cylinder (50% more displacement and higher pressure)

Custom mounting available upon request (50 quantity minimum).

| ITEM # | TYPE | DESCRIPTION | WT (LBS.) |
|--|------|---|-----------|
| 8104411 | DA10 | Plated, 2 ⅝" EZ-Latch, drop tube, *universal outer case fluid return hole only, less solenoid | 52 |
| 8103511 | DA10 | Plated, 2 ⅝" EZ-Latch, drop tube, standard outer case | 54 |
| 8103802 | DA10 | Primed, straight tube, 2 ⅝" EZ-Latch, no mount outer case | 50 |
| With bypass solenoid kits installed | | | |
| 8104002 | DA10 | Primed, straight tube, 2 ⅝" EZ-Latch, no mount outer case | 54 |
| 8104111 | DA10 | Plated, 2 ⅝" EZ-Latch, drop tube, standard outer case | 56 |
| 8104311 | DA10 | Plated, 2 ⅝" EZ-Latch, drop tube, *universal outer case | 56 |

* Universal - 5 hole mount consists of 3 ½" holes and 2 ⅝" holes.
Standard - 5 hole mount consists of 5 ½" holes.

Bypass solenoid kits for disc brakes (fit both 8,000 and 12,000 lb. G.V.W.R. actuators).

| | | | |
|------|------|----------------------------------|---|
| 5752 | DA10 | Solenoid kit (factory installed) | 2 |
| 5750 | DA10 | Solenoid kit (field installed) | 2 |

Note: Solenoid kit design is subject to change at Demco's discretion.

20,000 lb. G.V.W.R.

DA20 available in either weld-on or bolt-on mounts. 2000 lb. maximum tongue load on 20,000 lb. G.V.W.R. actuators. DA20 actuators utilize Acetal Copolymer linings. Rollers are eliminated. DA20 actuators may be ordered with or without various couplers. All DA20 models with coupler adjusting channels have 3" inside dimensions. Emergency lever guide and guide ring on DA20.

Note: All DA20 disc brake actuators feature a 1 ¼" aluminum master cylinder (50% more displacement and higher pressure)

Custom mounting available upon request (50 quantity minimum).

| ITEM # | TYPE | DESCRIPTION | WT (LBS.) |
|---------|------|---|-----------|
| 8203102 | DA20 | Primed, 2 ⅝" EZ-Latch, straight tube, no mount outer case | 69 |
| 8203201 | DA20 | Plated, 2 ⅝" EZ-Latch, straight tube, 3 hole outer case | 70 |
| 8204111 | DA20 | Plated, 2 ⅝" EZ-Latch, drop tube, 5 hole mount outer case | 70 |
| 8204701 | DA20 | Plated, 2 ⅝" EZ-Latch, straight tube, primed, no mount outer case | 70 |
| 8204211 | DA20 | Plated, 2 ⅝" EZ-Latch, drop tube, 5 hole mount outer case (With return hole, less solenoid) | 70 |

* Universal - 5 hole mount consists of 3 ½" holes and 2 ⅝" holes.
Standard - 5 hole mount consists of 5 ½" holes.

Note: Bypass solenoids must be installed on DA20 disc brake actuators.

With bypass solenoid kits installed

| | | | |
|---------|------|---|----|
| 8204311 | DA20 | Plated, 2 ⅝" EZ-Latch, drop tube, 5 hole mount outer case | 72 |
| 8203711 | DA20 | Plated, 2 ⅝" EZ-Latch, drop tube, 3 hole mount outer case | 72 |

Bypass solenoid kits for disc brakes (fit 20,000 lb. G.V.W.R. actuators).

| | | | |
|------|------|----------------------------------|---|
| 5755 | DA20 | Solenoid kit (factory installed) | 2 |
| 5753 | DA20 | Solenoid kit (field installed) | 2 |

NOTE: Demco 2 ⅝" EZ-Latch Couplers are Patent Pending.



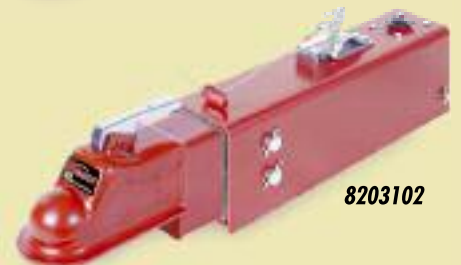
8104411



8103802



8104002



8203102



8204111



8203701



8605001



8609101



8669111



8609512



8509212



8509612

6,000 lb. G.V.W.R.

½" x 4 ½" grade 5 bolts are required in mounting of straight actuators. 600 lb. maximum tongue load on 6,000 lb. G.V.W.R actuators. G.V.W.R. – Limited to coupler rating. Plated actuator may be used in a marine application.

| ITEM # | TYPE | DESCRIPTION | WT (LBS.) |
|---------|-------|---------------------------------------|-----------|
| 8605001 | DA66B | Plated, top mount, lever lock coupler | 21 |

6,000 lb. G.V.W.R.

½" x 4 ½" grade 5 bolts are required in mounting of straight actuators. 600 lb. maximum tongue load or 10% of G.V.W.R of coupler, vehicle, ball or trailer. 50° A-frame mounted actuator may be welded on. Plated actuator may be used in a marine application. DA91 actuators utilize Acetal Copolymer linings. Rollers are eliminated. G.V.W.R. – Limited to coupler rating. Emergency lever support and guide ring standard on DA91 and DA95 series. **Custom mounting available upon request (50 quantity minimum).**

| ITEM # | TYPE | DESCRIPTION | WT (LBS.) |
|---------|------|--|-----------|
| 8609101 | DA91 | Plated, straight tube, 2" bolt-on, coupler | 41 |
| 8669111 | DA91 | Plated, drop tube, 2" bolt-on coupler | 47 |

| | | | |
|---------|--------|--|----|
| 8609512 | DA9150 | Primed, drop tube, 2" bolt-on coupler, 50° mount | 59 |
|---------|--------|--|----|

7,000 lb. G.V.W.R.

½" x 4 ½" grade 5 bolts are required in mounting of straight actuators. 700 lb. maximum tongue load or 10% of G.V.W.R of coupler, vehicle, ball or trailer. 50° A-frame mounted actuator may be welded on. Plated actuator may be used in a marine application. DA91 and DA9150 actuators utilize Acetal Copolymer linings. Rollers are eliminated. G.V.W.R. – Limited to coupler rating. Emergency lever support and guide ring (on DA91 and DA95 series). **Custom mounting available upon request (50 quantity minimum).**

| ITEM # | TYPE | DESCRIPTION | WT (LBS.) |
|---------|--------|---|-----------|
| 8509202 | DA91 | Primed, 2" bulldog coupler welded to straight tube | 43 |
| 8509212 | DA91 | Primed, 2" bulldog coupler welded to drop tube | 46 |
| 8509602 | DA9150 | Primed, 2" bulldog coupler welded to straight tube, 50° mount | 62 |
| 8509612 | DA9150 | Primed, 2" bulldog coupler welded to drop tube, 50° mount | 64 |
| 5751 | DA10 | Solenoid kit (factory installed) | 2 |
| 5750 | DA10 | Solenoid kit (field installed) | 2 |

8,000 lb. G.V.W.R.

½" x 4 ½" grade 5 bolts are required in mounting of straight actuators. 800 lb. maximum tongue load or 10% of G.V.W.R. of coupler, vehicle, ball or trailer. 50° A-frame mounted actuator may be welded on. Plated actuator may be used in a marine application. DA91 and DA9150 actuators utilize Acetal Copolymer linings. Rollers are eliminated. G.V.W.R. – Limited to coupler rating. Emergency lever support and guide ring (on DA91 and DA95 series).

Custom mounting available upon request (50 quantity minimum).

| ITEM # | TYPE | DESCRIPTION | WT (LBS.) |
|---------|--------|--|-----------|
| 8759121 | DA91 | Plated, channel center | 40 |
| 8759122 | DA91 | Primed, channel center | 40 |
| 8759131 | DA91 | Plated, channel down | 40 |
| 8759132 | DA91 | Primed, channel down | 40 |
| 8759142 | DA91 | Primed, channel up | 40 |
| 8759152 | DA91 | Primed, flat mount | 46 |
| 8758521 | DA91 | Plated, 12" channel center | 44 |
| 8759411 | DA91 | Plated, 2 ¾" EZ-Latch, drop tube, standard outer case | 58 |
| 8759522 | DA91 | Primed, channel center, 50° mount | 53 |
| 8759532 | DA91 | Primed, channel down, 50° mount | 53 |
| 8759802 | DA9550 | Primed, 2 ½" bulldog coupler, straight tube, 50° mount | 60 |
| 8759812 | DA9550 | Primed, 2 ½" bulldog coupler, drop tube, 50° mount | 62 |
| 8759922 | DA91 | Primed, channel center, weld-on case | 39 |
| 8759942 | DA91 | Primed, channel up, weld-on case | 39 |

Bypass solenoid kits for drum brakes (fit both DA91 and DA10 actuators).

| | | | |
|------|------|----------------------------------|---|
| 5751 | DA10 | Solenoid kit (factory installed) | 2 |
| 5750 | DA10 | Solenoid kit (field installed) | 2 |

Blocking solenoid kit for disc brakes (fit both DA91 and DA10 actuators).

| | | | |
|------|------|--------------------------------|---|
| 5837 | DA91 | Solenoid kit (field installed) | 2 |
|------|------|--------------------------------|---|

Note: Solenoid kit design is subject to change at Demco's discretion.

8,600 lb. G.V.W.R.

½" x 4 ½" grade 5 bolts are required to mount actuators. 860 lb. maximum tongue load or 10% of G.V.W.R. of coupler, vehicle, ball or trailer. Plated actuator may be used in marine application.

| ITEM # | TYPE | DESCRIPTION | WT (LBS.) |
|---------|------|--|-----------|
| 8608601 | DA86 | Plated, 2" EZ-Latch, bolt on case | 25 |
| 8608701 | DA86 | Painted black, 2" EZ-Latch, bolt on case | 25 |

NOTE: Demco 2" EZ-Latch Coupler is Patent Pending.



8759121



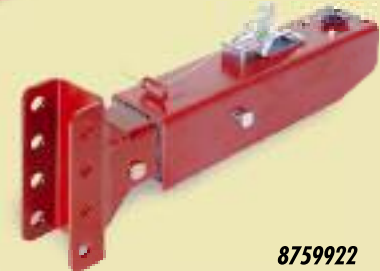
8759152



8759411



8759812



8759922



8608601



07686



8101022



8101232



8101801



8102511



8102222

12,000 lb. G.V.W.R.

Used for agricultural running gears or drop tongue trailers. Bolt-on model.

| ITEM # | TYPE | DESCRIPTION | WT (LBS.) |
|--------|------|---|-----------|
| 07686 | DA12 | Painted black, agricultural gear actuator | 23 |

12,500 lb. G.V.W.R.

½" x 4 ½" grade 5 bolts are required to mount actuators. 1,250 lb. maximum tongue load or 10% of G.V.W.R. of coupler, vehicle, ball or trailer. 50° A-frame mounted actuator may be welded on. DA10 actuators utilize Acetal Copolymer linings. Rollers are eliminated. DA10 actuators may be ordered with or without various couplers. All DA10 models with coupler adjusting channels have 3" inside dimensions. Emergency lever guide and ring on DA10.

Custom mounting available upon request (50 quantity minimum).

| ITEM # | TYPE | DESCRIPTION | WT (LBS.) |
|---------|------|--|-----------|
| 8101021 | DA10 | Plated, channel center, standard outer case | 51 |
| 8101022 | DA10 | Primed, channel center, standard outer case | 51 |
| 8101031 | DA10 | Plated, channel down, standard outer case | 51 |
| 8101032 | DA10 | Primed, channel down, standard outer case | 51 |
| 8101042 | DA10 | Primed, channel up, standard outer case | 51 |
| 8101222 | DA10 | Primed, channel center, no mount outer case | 48 |
| 8101232 | DA10 | Primed, channel down, no mount outer case | 48 |
| 8101242 | DA10 | Primed, channel up, no mount outer case | 48 |
| 8102131 | DA10 | Plated, 12" channel down, standard outer case | 55 |
| 8101522 | DA10 | Primed, 12" channel center, no mount outer case | 53 |
| 8103432 | DA10 | Primed, 12" channel down, no mount outer case | 53 |
| 8101532 | DA10 | Primed, 12" channel down, 6 hole outer mount case | 54 |
| 8104821 | DA10 | Plated, channel center, 6 hole outer mount case | 51 |
| 8104831 | DA10 | Plated, channel down, 6 hole outer case | 51 |
| 8101801 | DA10 | Plated, straight tube, 2 5/16" EZ-Latch, standard outer case | 55 |
| 8101802 | DA10 | Primed, straight tube, 2 5/16" EZ-Latch, standard outer case | 55 |
| 8102511 | DA10 | Plated, 2 5/16" EZ-Latch, drop tube standard outer case | 57 |
| 8103102 | DA10 | Primed, straight tube, 2 5/16" EZ-Latch, no mount outer case | 52 |
| 8102222 | DA10 | Primed, channel center, 50° mount | 64 |
| 8102232 | DA10 | Primed, channel down, 50° mount | 64 |

Bypass solenoid kits for drum brakes (fit both DA91 and DA10 actuators).

| | | | |
|------|------|----------------------------------|---|
| 5751 | DA10 | Solenoid kit (factory installed) | 2 |
| 5750 | DA10 | Solenoid kit (field installed) | 2 |

Blocking solenoid kit for disc brakes (fit both DA91 and DA10 actuators).

| | | | |
|------|------|--------------------------------|---|
| 5837 | DA10 | Solenoid kit (field installed) | 2 |
|------|------|--------------------------------|---|

Note: Solenoid kit design is subject to change at Demco's discretion.

NOTE: Demco 2 5/16" EZ-Latch Couplers are Patent Pending.

20,000 lb. G.V.W.R.

DA20 available in either weld-on or bolt-on mounts. 2,000 lb. maximum tongue load or 10% of G.V.W.R. of coupler, vehicle, ball or trailer. 50° A-frame mounted actuator may be welded on. DA20 actuators may be ordered with or without various couplers. All DA20 models with coupler adjusting channels have 3" inside dimensions. Emergency lever guide and guide ring on DA20.

Custom mounting available upon request (50 quantity minimum).

| ITEM # | TYPE | DESCRIPTION | WT (LBS.) |
|---------|------|---|-----------|
| 8202022 | DA20 | Primed, channel center, no mount outer case | 62 |
| 8202032 | DA20 | Primed, channel down, no mount outer case | 62 |
| 8202122 | DA20 | Primed, channel center, 15" mount | 70 |
| 8202052 | DA20 | Primed, flat mount, no mount outer case | 70 |
| 8203322 | DA20 | Primed, 12" channel centered, no mount outer case | 64 |
| 8203332 | DA20 | Primed, 12" channel down, no mount outer case | 64 |
| 8202521 | DA20 | Plated, 12" channel center, 6 hole outer case | 72 |
| 8202522 | DA20 | Primed, 12" channel center, 6 hole outer case | 72 |
| 8202531 | DA20 | Plated, 12" channel down, 6 hole outer case | 72 |
| 8202532 | DA20 | Primed, 12" channel down, 6 hole outer case | 72 |
| 8202802 | DA20 | Primed, straight tube, 2 5/8" EZ-Latch, no mount outer case | 65 |
| 8202222 | DA20 | Primed, channel center, 50° mount | 80 |
| 8202232 | DA20 | Primed, channel down, 50° mount | 80 |
| 8204011 | DA20 | Plated, 2 5/8" EZ-Latch, drop tube, *universal outer case | 69 |

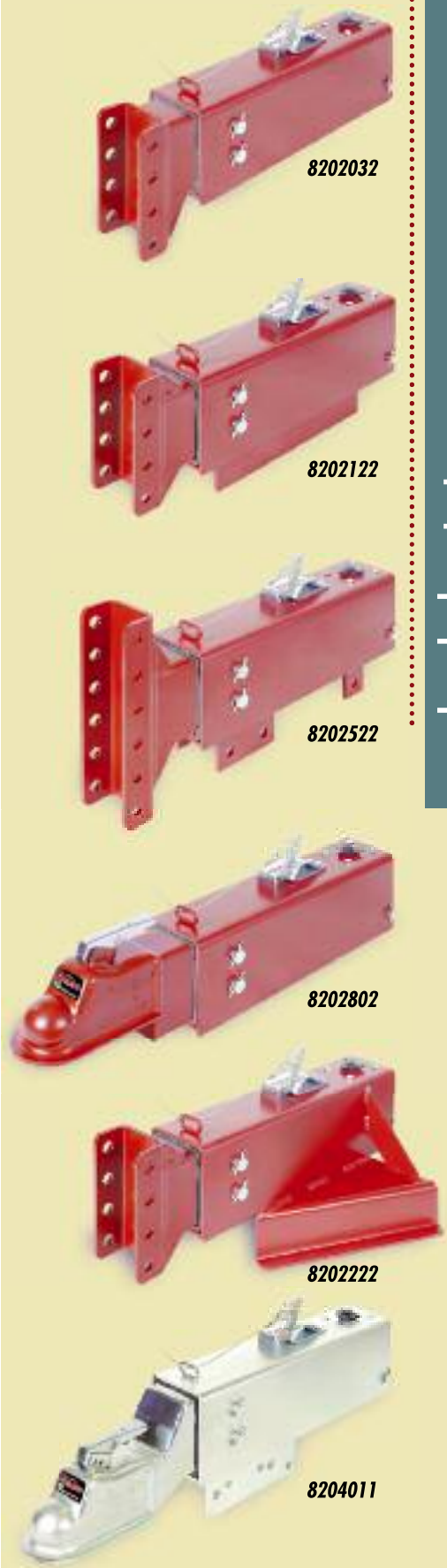
* Universal - 5 hole mount consists of 3 1/2" holes and 2 5/8" holes.
Standard - 5 hole mount consists of 5 1/2" holes.

Bypass solenoid kits for drum/disc brakes (fit 20,000 lb. G.V.W.R. actuators).

| | | | |
|------|------|----------------------------------|---|
| 5754 | DA20 | Solenoid kit (factory installed) | 2 |
| 5753 | DA20 | Solenoid kit (field installed) | 2 |

Note: Solenoid kit design is subject to change at Demco's discretion.

NOTE: Demco 2 5/8" EZ-Latch Couplers are Patent Pending.



drum brake actuators

Demco eZ-LATCH Coupler



EXCLUSIVE

It's the most important task to perform when preparing to tow a trailer, but it's the easiest to forget.



Normally, the EZ-latch coupler is in its locked position. There's no need to lift the lever to hook up.

When the coupler is being lowered over the hitch ball, the lever lifts to allow the coupler socket to receive the hitch ball.

Once the hitch ball is seated in the coupler, the latch snaps to its locked position.

Demco has an exclusive coupler design that locks when dropped over its appropriate sized standard hitch ball. The EZ-Latch coupler is offered in an array of different hitch mounts in both 2" and 2 5/16" ball coupler sizes. Mounting configurations include: weld-on and bolt-on for 3" tongue tube, A-frame weld-on, and bolt-on adjustable height channel mounts.

In addition to this new EZ-Latch feature, these new couplers have an enhanced weight rating. The Demco 2" EZ-Latch ball coupler is SAE J684 certified at 10,000 lbs. The Demco 2 5/16" EZ-latch ball coupler adjustable height channel mount style is SAE J684 certified at 20,000 lbs. The Demco 2 5/16" EZ-Latch ball coupler weld-on and flat mount style is SAE J684 certified at 21,000 lbs.

The EZ-Latch feature and the enhanced certified weight rating, make these couplers an excellent choice when designing to build or when replacing an existing ball coupler. Demco has tested and certified these products to give you peace of mind and confidence in your efforts to provide safe and responsible trailer products.

2" **EZ-Latch**
weld on



NEW!

10,000 lb. rating

2" **EZ-Latch**
bolt on



NEW!

2" bulldog
bolt to channel



2" bulldog
bolt to channel



2" lever lock
bolt on



2" hand wheel
bolt on



2" lever lock
bolt to channel



2" **EZ-Latch**
bolt to channel



2 5/16" **EZ-Latch**
weld on



NEW!

2 5/16" **EZ-Latch**
A-frame weld on



NEW!

2 5/16" **EZ-Latch**
A-frame weld on
with jack hole



NEW!

10,000 lb. rating

2 5/16" **EZ-Latch**
flat plate



2 5/16" **EZ-Latch**
bolt to channel



2 5/16" **EZ-Latch**
bolt to channel



Clevis 10,000 lb.
bolt to channel



Clevis 20,000 lb.
bolt to channel



NEW!

Pintle ring
bolt to channel



Pintle ring
bolt to channel



2 5/16" bulldog
bolt to channel



2 5/16" bulldog
bolt to channel



See pages 13 & 14 for more details.

All Demco EZ-Latch couplers are patent pending.

12563



NEW

NEW



12564

11962-95



11963-95

12113-95



NEW



12688-95

05823-97



05823-95

2" ball couplers

| ITEM # | DESCRIPTION | WT (LBS.) |
|--------|---|-----------|
| 12563 | Primed, 2" EZ-Latch, G.V.W.R. 10,000 lb. capacity, weld on | 8 |
| 12564 | Plated, 2" EZ-Latch, *G.V.W.R. 10,000 lb. capacity, bolt on | 8 |



ez-LATCH Coupler

| | | |
|----------|---|-----|
| 11962-95 | Plated, 2" lever lock, G.V.W.R. 6,000 lb. capacity, bolt on | 5.5 |
| 11963-95 | Plated, 2" hand wheel, G.V.W.R. 6,000 lb. capacity, bolt on | 5.4 |

| | | |
|----------|---|----|
| 12113-95 | Plated, 2" lever lock, G.V.W.R. 6,000 lb. capacity, bolt on channel | 10 |
|----------|---|----|

| | | |
|----------|--|----|
| 12688-95 | Plated, 2" EZ-Latch, G.V.W.R. 10,000 lb. capacity, bolt on channel | 12 |
|----------|--|----|



ez-LATCH Coupler

| | | |
|----------|--|----|
| 05823-97 | Primed, 2" bulldog, G.V.W.R. 7,000 lb. capacity, bolt on channel | 12 |
| 05823-95 | Plated, 2" bulldog, G.V.W.R. 7,000 lb. capacity, bolt on channel | 12 |

NOTE: All Demco 2" EZ-Latch Couplers are Patent Pending.

2 5/16" ball couplers

| ITEM # | DESCRIPTION | WT (LBS.) |
|----------|--|-----------|
| 12662-97 | Primed, 2 5/16" EZ-Latch, G.V.W.R. 21,000 lb. capacity, weld on | 8.5 |
| 12141-97 | Primed, 2 5/16" EZ-Latch, G.V.W.R. 21,000 lb. capacity, flat mount | 13.5 |
| 12141-95 | Plated, 2 5/16" EZ-Latch, G.V.W.R. 21,000 lb. capacity, flat mount (not shown) | 13.5 |



ez-LATCH Coupler

| | | |
|----------|--|----|
| 12661-97 | Primed, 2 5/16" EZ-Latch, G.V.W.R. 21,000 lb. capacity, A-frame weld on, without jack hole | 12 |
| 12660-97 | Primed, 2 5/16" EZ-Latch, G.V.W.R. 21,000 lb. capacity, A-frame weld on, with jack hole | 12 |



ez-LATCH Coupler

| | | |
|----------|---|----|
| 07678-97 | Primed, 2 5/16" EZ-Latch, G.V.W.R. 20,000 lb. capacity, bolt on channel | 10 |
| 07678-95 | Plated, 2 5/16" EZ-Latch, G.V.W.R. 20,000 lb. capacity, bolt on channel | 10 |

| | | |
|----------|--|----|
| 05557-97 | Primed, 2 5/16" bulldog, G.V.W.R. 12,500 lb. capacity, bolt on channel | 12 |
| 05557-95 | Plated, 2 5/16" bulldog, G.V.W.R. 12,500 lb. capacity, bolt on channel | 12 |

Clevis & pintle ring couplers

| ITEM # | DESCRIPTION | WT (LBS.) |
|----------|--|-----------|
| 05593-97 | Primed, clevis, G.V.W.R. 10,000 lb. capacity, bolt on channel | 11 |
| 12676-30 | Painted black, G.V.W.R. 20,000 lb. capacity, bolt on channel | 12 |
| 09557-97 | Primed, pintle ring, 3" ID, 6" OD, G.V.W.R. 20,000 lb. capacity, bolt on channel | 11 |
| 09557-95 | Plated, pintle ring, 3" ID, 6" OD, G.V.W.R. 20,000 lb. capacity, bolt on channel | 11 |

NOTE: Demco 2 5/16" EZ-Latch Couplers are Patent Pending.

12662-97



12141-97

12661-97



12660-97

07678-97



07678-95

05557-97



05557-95

05593-97



12676-30

NEW

09557-97



09557-95

couplers, clevises & pintle rings

10" Free Backing Brakes



**Reverse Braking – Minimal
Axle Rating – 3500 lbs.
Wheel Size – 13 - 15"**

10" Self Adjusting Brakes



**Reverse Braking – 15 - 20%
Axle Rating – 3500 lbs.
Wheel Size – 13 - 15"**

10" Uni-Servo Brakes



**Reverse Braking – 15 - 20%
Axle Rating – 3500 lbs.
Wheel Size – 13 - 15"**

10" Duo-Servo Brakes



**Reverse Braking – 100%
Axle Rating – 3500 lbs.
Wheel Size – 13 - 15"**

10" brake clusters

Free Backing Brakes

Incorporates a "fall-away" shoe which diminishes shoe drag when backing up. Requires periodic manual adjustment. Marine cluster has galvanized back plate, stainless steel spring hardware, plated wheel cylinder and riveted marine brake shoe.

| RIGHT# | LEFT # | BOLT HOLE PATTERN | WT (LBS.) |
|--------------------------------------|----------|-------------------|-----------|
| Standard (WHILE SUPPLY LASTS) | | | |
| SB40715 | SB40716 | 4" on 4" | 10 |
| Marine | | | |
| SB40715M | SB40716M | 4" on 4" | 10 |

Self Adjusting Uni-Servo Brakes

20% braking in reverse. Self-adjusting brakes eliminate the need for periodic adjustment. Will not "over-adjust" – an exclusive feature from Demco. Marine cluster has galvanized back plate, stainless steel spring hardware, plated wheel cylinder and riveted marine brake shoe.

| RIGHT# | LEFT # | BOLT HOLE PATTERN | WT (LBS.) |
|--------------------------------------|----------|-------------------|-----------|
| Standard (WHILE SUPPLY LASTS) | | | |
| SB23714 | SB23715 | 4" on 4" | 9.2 |
| Marine | | | |
| SB23714M | SB23715M | 4" on 4" | 9.2 |
| SB24428M | SB24429M | 4" on 3.96" | 9.2 |

Uni-Servo Brakes

20% braking in reverse. Requires periodic manual adjusting. Marine cluster has galvanized back plate, stainless steel spring hardware, plated wheel cylinder and riveted marine brake shoe.

| RIGHT# | LEFT # | BOLT HOLE PATTERN | WT (LBS.) |
|---------------|----------|-------------------|-----------|
| Marine | | | |
| SB18787M | SB18788M | 4" on 4" | 10 |

Duo-Servo Brakes

Applies braking pressure equally in forward or reverse travel. Primarily for industrial applications. Requires periodic manual adjustment. Marine cluster has galvanized back plate, stainless steel spring hardware, plated wheel cylinder and riveted marine brake shoe.

| RIGHT# | LEFT # | BOLT HOLE PATTERN | WT (LBS.) |
|--------------------------------------|----------|-------------------|-----------|
| Standard (WHILE SUPPLY LASTS) | | | |
| SB18793 | SB18794 | 4" on 4" | 9.2 |
| Marine | | | |
| SB18793M | SB18794M | 4" on 4" | 9.2 |

12" brake clusters

Free Backing Brakes

Reverse braking - minimal. **Axle rating** - 5,200 lb. **Wheel size** - 14.5" - 16"
 Marine cluster has galvanized back plate, stainless steel spring hardware, plated wheel cylinder and riveted marine brake shoe.

| RIGHT# | LEFT # | BOLT HOLE PATTERN | WT (LBS.) |
|--------------------|----------|-------------------|-----------|
| Marine SB42028M | SB42029M | 5 on 3.875" | 19 |

Uni-Servo Brakes

Reverse braking - 15 - 20%. **Axle rating** - 5,200 lb. **Wheel size** - 14.5" - 16"
 Marine cluster has galvanized back plate, stainless steel spring hardware, plated wheel cylinder and riveted marine brake shoe.

| RIGHT# | LEFT # | BOLT HOLE PATTERN | WT (LBS.) |
|--------------------|----------|-------------------|-----------|
| Marine SB23510M | SB23511M | 5 on 3.875" | 19 |

13" brake clusters

Free Backing Brakes (shown)

Reverse braking - minimal. **Wheel size** - 16" - 20"

| RIGHT# | LEFT # | BOLT HOLE PATTERN | WT (LBS.) |
|-------------------|--------|-------------------|-----------|
| Standard 01971 | 01970 | 4 on 4.813" | 21 |

Uni-Servo Brakes (not shown)

Reverse braking - 15 - 20%. **Wheel size** - 16" - 20"

| RIGHT# | LEFT # | BOLT HOLE PATTERN | WT (LBS.) |
|-------------------|--------|-------------------|-----------|
| Standard 07911 | 07910 | 4 on 4.813" | 21 |

10" brake drums

| ITEM # | # OF BOLTS | BOLT HOLE DIA. | BOLT CIRCLE DIA. | PILOT HOLE DIA. | HYATT HUB # | WT. (LBS.) |
|---------|------------|----------------|------------------|-----------------|-------------|------------|
| SB40929 | 5 | 17/32" | 115MM | 2 1/4" | 926 | 14 |

13" brake drums

| ITEM # | DICO ITEM # | # OF BOLTS | BOLT HOLE DIA. | BOLT CIRCLE DIA. | PILOT HOLE DIA. | STYLE | WT. (LBS.) |
|--------|-------------|------------|----------------|------------------|-----------------|-------|------------|
| 05353 | 9894 | 8 | 5/8" | 8" | 5 3/4" | A | 20.6 |
| 07324 | 16964 | 6 | 17/32" | 8 1/4" | 6" | A | 20.3 |

| ITEM # | DICO ITEM # | # OF BOLTS | BOLT HOLE DIA. | BOLT CIRCLE DIA. | PILOT HOLE DIA. | STYLE | WT. (LBS.) |
|--------|-------------|------------|----------------|------------------|-----------------|-------|------------|
| 03532 | 18859 | 8 | 17/32" | 5 1/2" | 4 3/8" | B | 22.5 |
| 03940 | 10111 | 6 | 17/32" | 5 1/2" | 4 3/8" | B | 22.6 |
| 03941 | 43268 | 8 | 17/32" | 5 1/2" | 4 1/2" | B | 21.9 |



12" Free Backing



12" Uni-Servo



13" Free Backing



SB40929



Style A - Flat
Brake Flange
Setback 2.875"



Style B - Offset
Brake Flange
Setback 3.441"

brake clusters & drums

Brake line kits

| ITEM # | DESCRIPTION | WT (LBS.) |
|--------------------------------|------------------------------|-----------|
| <i>Single Solid Axle Kit</i> | | |
| 5402 | With 66" and 17" lines | 2 |
| 5426 | With 80" and 17" lines | 2 |
| 5427 | With 72" line | 2.5 |
| <i>Single Torsion Axle Kit</i> | | |
| 5424 | With 66" and 17" lines | 3 |
| <i>Tandem Solid Axle Kit</i> | | |
| 5403 | With 66" and 17" lines | 4 |
| 5428 | With 72" line in lieu of 66" | 4 |
| 5429 | With 80" and 17" lines | 4 |
| <i>Tandem Torsion Axle Kit</i> | | |
| 5425 | With 66" and 17" lines | 4 |



Actuator brake bleeder

| ITEM # | DESCRIPTION | WT (LBS.) |
|--------|---|-----------|
| 10142 | Master cylinder adaptor for use with power bleeder (Rubber washer included) | 1 |
| 09215 | Rubber washer | |

Weld-on channel brackets

4 Hole (Hole spacing 2" centers) 8" over-all length.

| ITEM # | CHANNEL INSIDE DIMENSION | CHANNEL THICKNESS | WEIGHT RATING | WT (LBS.) |
|--------|--------------------------|-------------------|---------------|-----------|
| 55342 | 3" | 1/4" | 7,500 lbs. | 4 |
| 55289 | 3" | 5/16" | 10,000 lbs. | 5 |
| 57362 | 3" | 3/8" | 20,000 lbs. | 5 |

6 Hole (Hole spacing 2" centers) 12" over-all length.

| | | | | |
|-------|----|-------|-------------|---|
| 59601 | 3" | 5/16" | 10,000 lbs. | 7 |
| 59602 | 3" | 3/8" | 20,000 lbs. | 8 |

Backing plate brackets

| DEMCO ITEM # | PLATE DIMENSIONS | PILOT HOLE | WT (LBS.) |
|--------------|------------------------------------|------------|-----------|
| 54988 | .25" x 4.25" x 4.25" - 4 on 4.813" | 2 1/2" | .91 |
| 60124 | .25" x 4.25" x 4.25" - 4 on 4.813" | 2 3/4" | .91 |
| 52415 | .25" x 4.25" x 4.25" - 4 on 4.813" | 3" | .84 |
| 61715 | .25" x 4.25" x 4.25" - 4 on 4.813" | 3 1/4" | .76 |
| 59911 | .25" x 4.25" x 4.25" - 4 on 4.813" | 3 1/2" | .65 |



55342



55289



57362



59602



59601



54988



60124



52415



61715



59911

Committed to service

Making Demco Trailer Components the best value is Demco's number one commitment.



Materials: The search for excellence

Stress tables are not the final word when designing brake products. At Demco, we begin with analyzing stress data. With this information, materials are selected for a prototype. Our purchasing department then searches for the best materials and components. This search also includes long term availability and delivery. Top grade components, computer aided design and quality workmanship all add up to Demco excellence.

Testing keeps us on top

All our products are put through a rigorous testing program, exposing the prototype beyond normal recommended use. We know our reputation for quality will continue to surface if we consistently test our products to this degree.

High quality workmanship

In the hands of our skilled production personnel, quality materials become quality finished products. All components must pass inspection and comply to rigid, detailed specifications before they are assembled and delivered to you.

You're in good company with Demco

At Demco, it's our goal to provide quality products that meet and exceed the needs of our customers. You can count on us for on-time delivery and attention to details.



P.O. Box 189 • 4010 320th Street • Boyden, Iowa 51234
(712) 725-2311 • 1-800-543-3626 • FAX: 1-800-845-6420
View all Demco products on the web at: www.demco-products.com

Doing our Best to Provide You the Best